

Rockwell service letter

No. SL-AG-41

International

P.O. BOX 3090 ALBANY, GEORGIA 31706-3090 PHONE 229/883-1440 FAX 229/439-9790

Service Letter No. SL-AG-41
March 25, 1966

ADDITIONAL BOOM SUPPORT

APPLICABILITY: ALL S-2C, S-2D Aircraft, Serial Number 1254 thru 1349

This Service Letter applies to the above mentioned serial number airplanes which have full booms (extended to outboard end of aileron). Several of the under aileron boom supports have failed due to boom vibration. The failures occurred at the junction of the quick disconnect tubes to boom support tubes.

An additional boom support which attaches to the trailing edge of the wing tip is available which will practically eliminate the boom vibration.

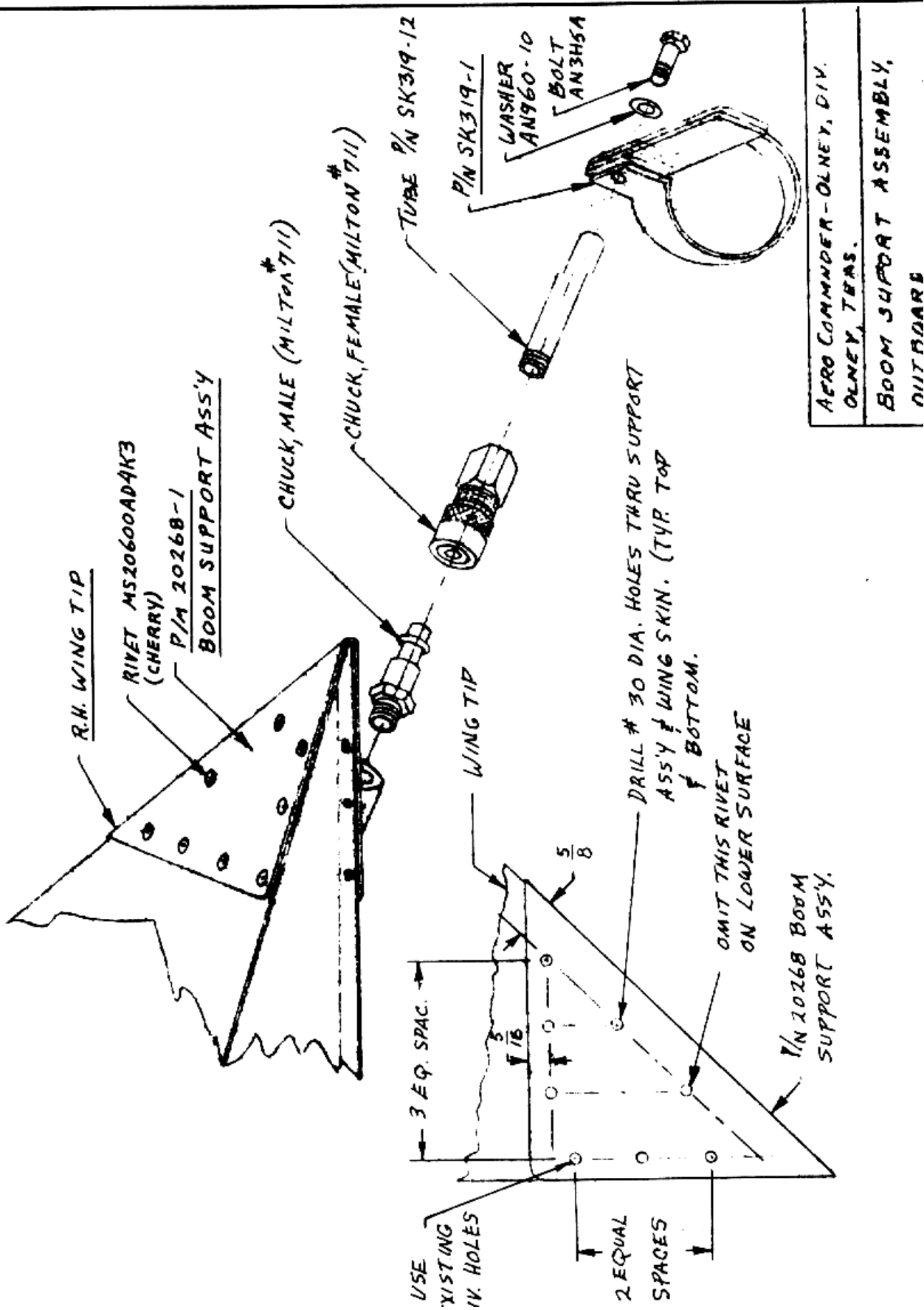
INSTALLATION INSTRUCTIONS:

1. Locate support bracket on wing tip trailing edge with quick disconnect male nipple pointing down and aft. Locate brackets such that the inboard most edges are flush with the wing tip inboard most edges and the bend line in the bracket is snug against the bend line of the wing tip. Further check the location of the bracket by clamping the quick disconnect hanger on to the boom temporarily.
2. When the support bracket has been properly located, if additional corrosion protection is desired, brush or spray a heavy coat of zinc chromate on the area covered by the support bracket and inside the bracket, (bracket has chromate & copon coatings) then install bracket.
3. With the bracket in place on the wing tip trailing edge, drill #30 holes through the wing tip skin to match the bracket. Install with MS20600AD4K3 (cherry) rivets in all holes to attach the bracket.
4. Slide boom support tube onto support bracket nipple, install clamps around boom end closure casting just inboard of plug boss with tabs pointing inboard. Rotate clamps to where clamp lines up with threaded hole in support tube. If hole in clamp does not line up with threaded hole, drill #10 holes in tabs. Install AN3H5A bolt & required washers to securely tighten. Safety wire bolt to clamp. Install other bolt in existing hole & tighten securely. Cut off excess tabs, file rough edges and paint to suit.

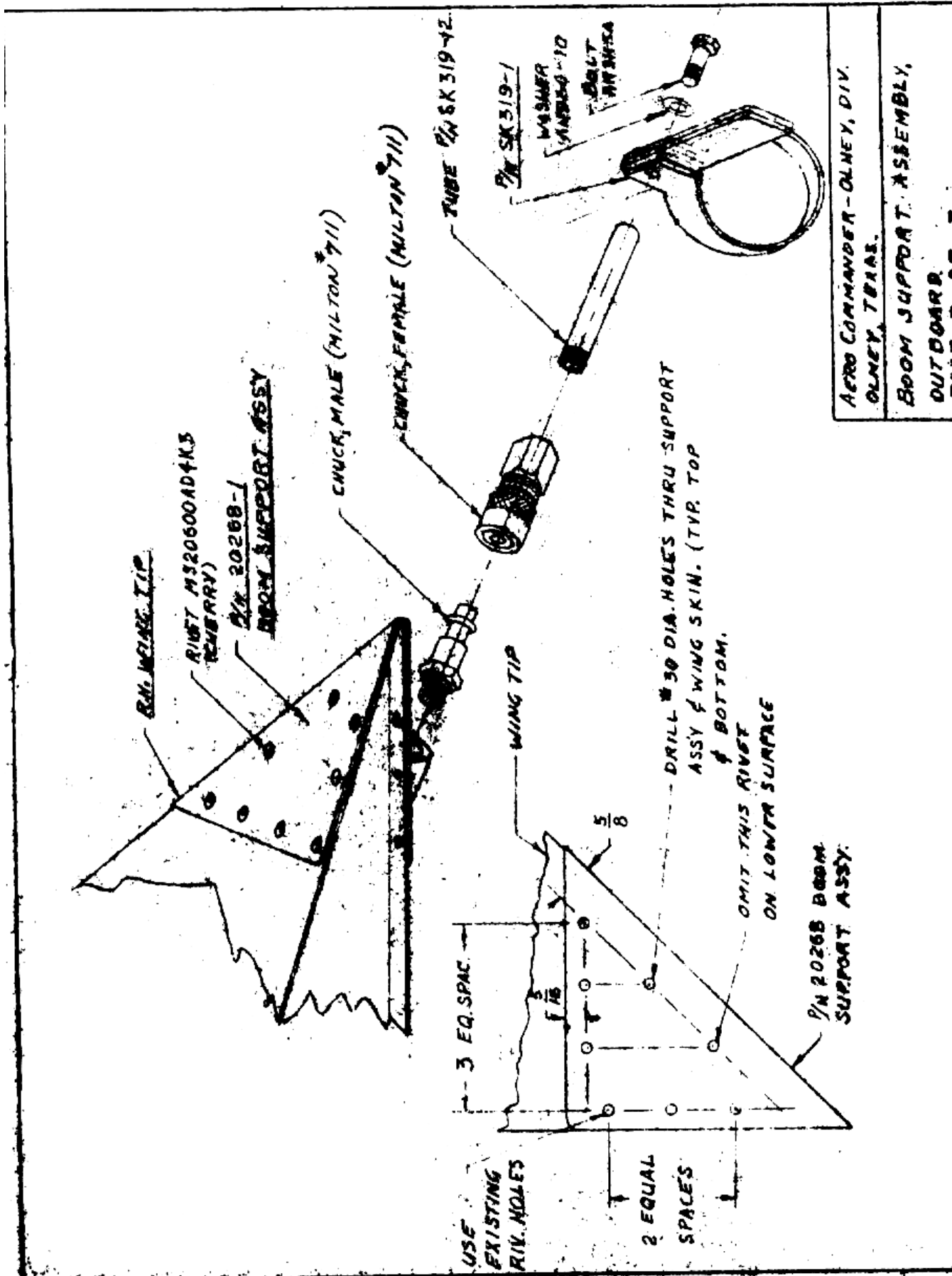
5. Repeat the operations on the opposite wing.

SERVICE KIT #41 – PARTS LIST

<u>DESCRIPTION</u>	<u>P/N</u>	<u>NO. REQ'D PER A/C</u>
Boom Support Bracket	20268-1	2 (1 right & 1 left)
Boom Hanger Assy.	SK319-12	2
Rivet (Cherry)	MS20600AD4K3	30
Bolt	AN3H5A	4
Washer	AN960-10	2
Nut	AN365-1032	2
Tube, Boom Support	SK-319-7	2
Quick Change Assy.	Milton 711	2



AERO COMMANDER-OLNEY, DIV.
 OLNEY, TEXAS.
 BOOM SUPPORT ASSEMBLY,
 OUTBOARD



AERO COMMANDER - OLNEY, DIV.
 OLNEY, TEXAS.
 BOOM SUPPORT ASSEMBLY,
 OUTBOARD