

Rockwell service letter No. SL-AG-90

International

P.O. BOX 3090 ALBANY, GEORGIA 31706-3090 PHONE 229/883-1440 FAX 229/439-9790

Service Letter No. SL-AG-90
8 February, 1977

ELEVATOR TRIM TAB PUSH-ROD REPLACEMENT

MODELS AFFECTED: S-2R, S/N 1416 thru 2240 AND 5000 thru 5082.

REASON FOR PUBLICATION: Attach hole in elevator tab horn may elongate in service. This service letter is being issued to alleviate this situation.

COMPLIANCE: At owners discretion on condition.

NOTE

If any problems are encountered while complying with this service letter, contract your nearest Thrush Commander dealer or your Thrush Commander regional service manager (Reference service information No. SI-123).

BY WHOM WORK WILL BE ACCOMPLISHED:

A & P Mechanic or equivalent

APPROVAL:

FAA DER Approved

ESTIMATED MAN HOURS:

Two (2) Hours

PARTS DATA:

Parts required to comply with this Service Letter may be purchased as a kit through your nearest Thrush Commander Dealer No. 1 \$61.45 and Kit No. 2, \$58.65. Reference this Service Letter, aircraft model and factory serial number when ordering Service Letter No. SL-AG-90 kit consisting of the following:

Price subject to change without notice.

Kit No. 1 – Serial No's 1416 thru 2240

Kit No. 2 – Serial No's 5000 thru 5082

<u>Kit No. 1</u>	<u>Kit No. 2</u>		
Qty	Qty	Part No.	Description
-	2 ea	901-13	Push Rod
-	2 ea	901-30	Push-Rod
2 ea	-	901-31	Push-Rod
2 ea	-	901-32	Push-Rod
8 ea	8 ea	AN3C11	Bolt
16 ea	16 ea	AN960C10	Washer
8 ea	8 ea	AN960C516	Washer
8 ea	8 ea	F34-14	Rod End
8 ea	8 ea	MS24665-151	Cotter Pin
8 ea	8 ea	NAS77-3-11	Bushing
1 ea	1 ea	Service Letter SL-AG-91	Instructions

SPECIAL TOOLS: None

ACCOMPLISHMENT INSTRUCTIONS:

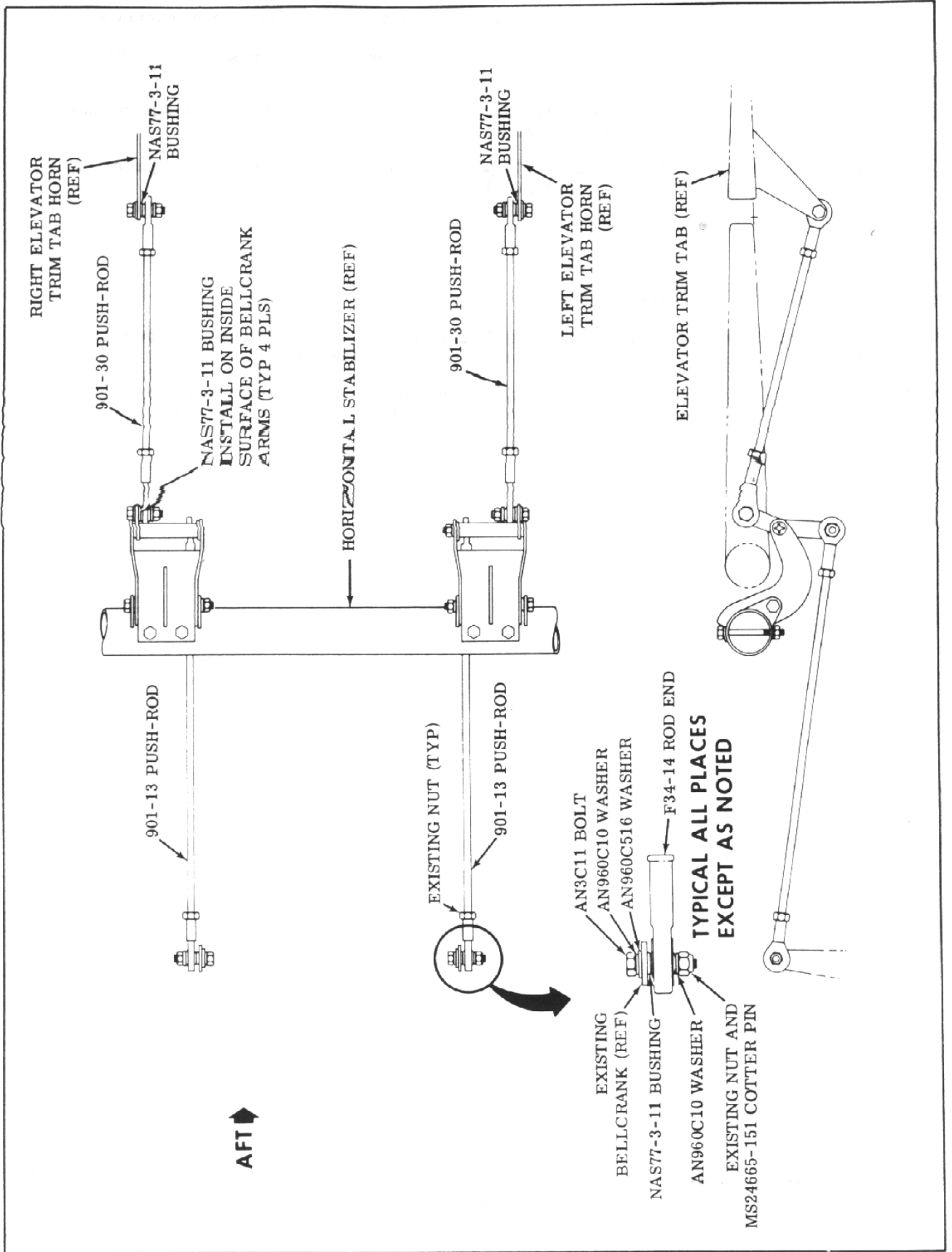
- 1 Remove and discard existing trim tab push-rods (4 places), existing push-rod clevises (8 places) and existing attaching bolts and cotter pins.

NOTE

Do not discard existing nuts.

- 2 Remove and discard existing bushing from elevator trim tab control horn and push-rod bellcranks.
- 3 Press fit NAS77-3-11 bushing (8 places) on elevator trim tab control horn and push-rod bellcranks (See Figure 1.).
- 4 On Serial numbers 1416 thru 2240, install 901-31 push-rod (2 places), 901-32 push-rod (2 places) and F34-14 rod end (8 places) on airplane (see Figure 1., Sheet 1 of 2).
- 5 On Serial numbers 5000 thru 5082, install 901-13 push-rod (2 places), 901-30 push-rod (2 places) and F34-14 rod end (8 places) on airplane (see Figure 1., Sheet 2 of 2).
6. Rerig elevator trim travel as outlined in the Airplane Maintenance Manual, Section VII.

SERVICE LETTER NO. SL-AG-90



ELECTRICAL LOAD: No Change

WEIGHT AND BALANCE: No Change

PUBLICATIONS AFFECTED: The Illustrated Parts Catalog and Airplane Maintenance Manual changes required by this document will be incorporated at the next scheduled change/revision.

RECORD COMPLIANCE: Make appropriate entry in airplane maintenance records as follows:

Service Letter No. SL-AG-90 dated 8 February 1977, entitled "Elevator Trim Tab Push-Rod Replacement", accomplished (date)_____.